

# TRANSPLAN Technical Advisory Committee

Participating entities: Cities of Antioch, Brentwood, Oakley and Pittsburg • Contra Costa County  
Tri Delta Transit • 511 Contra Costa • Contra Costa Transportation Authority (CCTA) • Caltrans District 4 • BART  
TRANSPLAN • State Route 4 Bypass Authority • East Contra Costa Regional Fee & Financing Authority (ECCRFFA)

---

**December 17, 2024 – 1:30 to 3:30 p.m.**

## **Meeting Location:**

**Antioch City Hall, Third Floor Conference Room  
200 H Street, Antioch, CA 94509**

## **Virtual meeting call-in/log-in information:**

**<https://cccouny-us.zoom.us/j/83049380591>**

**Meeting ID: 830 4938 0591**

## **Or Telephone:**

### **Dial:**

**USA 214 765 0478 US Toll  
USA 888 278 0254 US Toll-free  
Conference code: 198675**

## **AGENDA**

***NOTE: The Technical Advisory Committee ("TAC") agenda/packet is only distributed digitally; no paper copies will be sent. If you need a printed copy, please contact TRANSPLAN staff.***

### **Action/Discussion Items (see attachments where noted [♦])**

**Item 1: Public Comment:** The public will have an opportunity to comment on items not on the agenda.

**Item 2: RECEIVE presentation on the Countywide Emergency Evacuation Plan and PROVIDE input.** Contra Costa Transportation Authority (CCTA) staff will provide an update on the Countywide Emergency Evacuation Plan development process. The Plan will conduct local-level evacuation compliance assessments and a high-level evacuation route capacity, safety, and viability for the county that includes the nineteen cities/towns and unincorporated County. ♦ **Page 3**

**Item 3: REVIEW draft letter to CCTA RE: support for a bicycle gap closure between Central and East Counties and APPROVE forwarding the draft letter to the TRANSPLAN Committee.** At its November 2024 meeting, the TRANSPLAN Committee directed TRANSPLAN staff to draft a letter to CCTA to seek its support in enhancing bicycle and pedestrian connectivity between Central and East Counties, including potentially closing an existing trail gap in the vicinity of the former Concord Naval Weapon Station. ♦ **Page 10**

**Item 4: REVIEW draft letter supporting Contra Costa County's application to the Caltrans Sustainable Transportation Planning Grant Program and APPROVE forwarding the draft letter to the TRANSPLAN Committee.** The County has reached out to TRANSPLAN requesting a letter of support for its proposal to the FY 2025/26 Caltrans Sustainable Transportation Planning Grant Program. The proposal would evaluate enhanced bicycle and pedestrian facilities along the Willow Pass Road and Port Chicago Highway corridors in Bay Point. ♦ **Page 12**

**Item 5: RECEIVE miscellaneous TRANSPLAN TAC member comments.**

**Item 6: ADJOURN to Tuesday, January 21, 2025, at 1:30PM, or other date/time as deemed appropriate by the Committee.**

*The TAC meets on the third Tuesday of each month, 1:30 p.m., third floor conference room at Antioch City Hall. The TAC serves the TRANSPLAN Committee, the East Contra Costa Regional Fee & Financing Authority, and the State Route 4 Bypass Authority.*

*Persons needing a disability-related accommodation should contact Robert Sarmiento, TRANSPLAN staff person, at least 48 hours prior to the starting time of the meeting.*



CONTRA COSTA  
transportation  
authority

TRANSPLAN TAC

# Countywide Emergency Evacuation Plan

John Hoang, Director, Planning

December 17, 2024

# Countywide Emergency Evacuation Plan

- Caltrans Sustainable Transportation Planning Grant Program FY24-25
  - Climate Adaptation
- Grant Specific Objectives and Benefits
  - Benefits to public health, natural ecosystems, air quality, social equity, the economy, or reduction in GHG emissions
- Grant Specific Objectives, Partnership and stakeholders
- Alignments with other plans and State goals
- Cost
  - Grant Amount \$1,490,000
  - Match \$207,900
  - Total \$1,697,900

# Countywide Emergency Evacuation Plan

- Includes 19 Cities/Towns and Unincorporated County
  - With focus on vulnerable communities
  - Neighborhoods that lack network redundancy during evacuation scenarios
  - Help agencies determine how to improve the evacuation network during those events
- Builds on the multi-jurisdictional Local Hazard Mitigation Plan (multi-jurisdictional evacuation using routes that may span several jurisdictions)
  - Tie-in to regional and subregional transportation planning
- Plan addresses two deficiencies
  - Unfunded mandates requiring local governments to plan for emergency evacuation
    - SB 99: Conduct Local-Level Evacuation Compliance Assessment
    - AB 747: Evaluate High-Level Evacuation Route Capacity, Safety, and Viability
  - Unique regional economic and climate-related issues that affect the most vulnerable communities and their transportation system

# Countywide Emergency Evacuation Plan

- Hazards/Climate-induced Effects
  - Sea Level Rise, Wildfire Risks, Levee failure, Landslides, Tsunamis
  - Other Natural Hazards: Earthquakes
  - Manmade: Refinery Accidents
- Expected to Strain the Transportation network and communities throughout the County
- Efforts already undertaken by agencies to look at planning for resiliency.
  - Lafayette and Orinda completed locally-focused planning efforts
- Underserved communities
  - Richmond, El Cerrito San Pablo, Concord, Pittsburg, Antioch, Unincorporated (North Richmond Rodeo, Bay Point)
  - Equity Priority Communities (EPCs) [based on race, low-income, English proficiency, seniors,...]
  - MTC identifies 48 Census tracts in CC as EPCs
  - Engagement

# Countywide Emergency Evacuation Plan

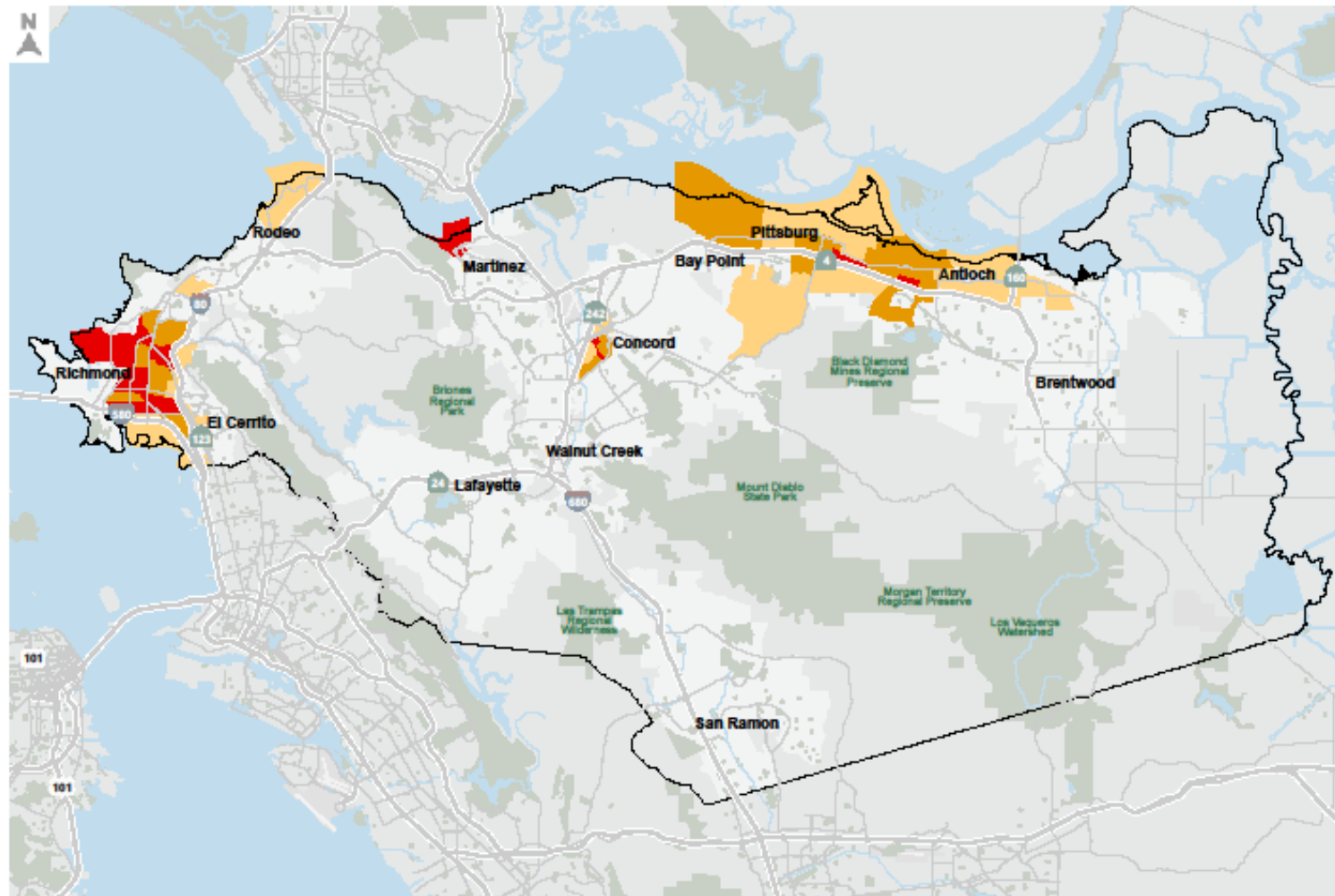
- Assessment of five sub-regions and evaluation of up to six emergency events per region using and interfacing with land use and roadway network data in the CCTA model. Based on the results of the assessment the Plan will include:
  - Project Prioritization: Prioritized projects in the identified vulnerable areas using a ranking criterion agreed by the Project's TAC
  - Cost Estimates/Project constraints: Cost estimates and key constraints of 20 top-ranked of projects with conceptual project designs.
  - Funding strategies and documentation: Potential funding strategies for the projects.

# Countywide Emergency Evacuation Plan

- Scope of Work
  - Task 1: Technical Advisory Committee
  - Task 2: Stakeholder and Public Outreach
  - Task 3: Network Resilience Assessment
    - Outreach Emergency Responders
    - Congestion Identification
    - Network Analysis
    - Emergency Response Time Assessment
    - AB 747/AB 1409 Assessment
    - Firesafe Accessibility Assessment
  - Task 4: Additional Infrastructure Resilience Assessment
    - Network Electrification Resiliency
    - Transit Shelter Evaluation
    - Vehicle Redundancy Assessment



# Equity Priority Communities



**MTC Equity Priority Community Classification**

High Higher Highest

Exhibit A

**MTC Equity Priority Communities**

# TRANSPLAN COMMITTEE

## EAST COUNTY TRANSPORTATION PLANNING

Antioch • Brentwood • Oakley • Pittsburg • Contra Costa County  
30 Muir Road, Martinez, CA 94553

---

January 9, 2025

Tim Haile, Executive Director  
Contra Costa Transportation Authority  
2999 Oak Road, #100  
Walnut Creek, CA 94597

### **RE: Enhancing Bicycle and Pedestrian Connectivity Between Central County and East County**

Dear Mr. Haile:

The TRANSPLAN Committee is seeking the Contra Costa Transportation Authority's (CCTA) support in enhancing bicycle and pedestrian connectivity between Central County and East County.

A low-stress bicycle/pedestrian facility that connects Central and East Counties does not currently exist. The few roadway options that connect the two subregions lack bicycle and pedestrian infrastructure, resulting in a high-stress and potentially dangerous experience for bicyclists and pedestrians. A segment of the Delta de Anza Trail runs west from Bay Point to eastern Concord but ends at Willow Pass Road. This leaves a gap in the bicycle/pedestrian network that spans the former Concord Naval Weapons Station and Diablo Creek Golf Course to Port Chicago Highway, which has existing bicycle and pedestrian facilities.

A low-stress bicycle/pedestrian facility to close the gap between Willow Pass Road and Port Chicago Highway will provide multiple benefits. It will provide the most direct bicycle and pedestrian connection between Central and East County. The gap closure will create a continuous trail facility from Brentwood to Concord and expand the countywide low-stress network. The facility will provide a safer and more comfortable experience for pedestrians and bicyclists who travel between the two subregions. Facilities with these characteristics generate substantially more usage. The facility will provide an alternate travel option along the congested State Route 4 corridor. It will contribute to reductions in greenhouse gas emissions and vehicle miles traveled. The facility will benefit nearby Clyde and Bay Point, two State-designated Disadvantaged Communities that suffer from greater exposure from traffic and higher levels of health-related issues such as asthma and cardiovascular diseases, and whose residents spend a greater percentage of their income on transportation costs.

The proposed low-stress facility is consistent with several CCTA planning documents:

- 2017 Countywide Transportation Plan,
- 2017 East County Action Plan,

- Draft 2023 East County Action Plan, and
- 2018 Countywide Bicycle and Pedestrian Plan, including its Proposed Low-Stress Countywide Bikeway Network.

The TRANSPLAN Committee looks forward to working with CCTA on closing this important bicycle/pedestrian gap and creating a bicycle and pedestrian network that Contra Costa jurisdictions can be proud of.

Sincerely,

\_\_\_\_\_, Chair  
TRANSPLAN Committee

# TRANSPLAN COMMITTEE

## EAST COUNTY TRANSPORTATION PLANNING

Antioch • Brentwood • Oakley • Pittsburg • Contra Costa County  
30 Muir Road, Martinez, CA 94553

---

January 9, 2025

John Cunningham, Planner  
Department of Conservation and Development  
Contra Costa County  
30 Muir Road  
Martinez, CA 94533

### **RE: Caltrans Sustainable Transportation Planning Grant Program Application: Bay Point Enhanced Active Transportation Improvements Study**

Dear Mr. Cunningham:

On behalf of the TRANSPLAN Committee, we wish to express our enthusiastic support for the advancement of Contra Costa County's ("County") pursuit of grant funding from the Caltrans Sustainable Transportation Planning Grant Program to conduct the Bay Point Enhanced Active Transportation Improvements Study. The study will evaluate the implementation of bicycle and pedestrian improvements, including separated bicycle facilities and green infrastructure, on Willow Pass Road and Port Chicago Highway, along with the segment of McAvoy Road that connects to McAvoy Harbor and the Bay Point Regional Shoreline, in the Bay Point community.

We will look forward to the County's evaluation of critical infrastructure improvements to support multimodal travel in Bay Point in the study. The infrastructure will improve multimodal connectivity to several prominent destinations along the study corridor, including McAvoy Harbor, the Bay Point Regional Shoreline, Ambrose Park, Anuta Park, and the commercial corridor on Willow Pass Road, and in conjunction with planned active transportation improvements projects on Pacifica Avenue and Bailey Road, Rio Vista Elementary School, Shoreview Elementary School, Riverview Middle School, Bel Air Elementary School, and the Pittsburg/Bay Point BART Station. It will address the community's desire for streets to be safer and more multimodal. The study is consistent with a goal of the East County Action Plan to improve multimodal mobility and decrease single-occupant vehicle travel in East Contra Costa County. In addition to providing a friendlier environment for multimodal travel, the active transportation infrastructure to be evaluated will support the aesthetic character of the Willow Pass Road commercial corridor, resulting in enhanced urban design and quality of life.

We appreciate the County in its effort to enhance multimodal transportation in East Contra Costa County and strongly encourage Caltrans to support the County's study.

Sincerely,

\_\_\_\_\_, Chair  
TRANSPLAN Committee

# BAY POINT ENHANCED BICYCLE/PEDESTRIAN IMPROVEMENTS STUDY

CONCEPT FOR ENHANCED ACTIVE TRANSPORTATION FACILITIES TO IMPROVE BIKE/PED SAFETY: MCAVOY HARBOR TO THE CITY OF PITTSBURG



*Railroad crossing at McAvoy Road, facing Port Chicago Highway*



*Port Chicago Highway, approaching the intersection with Willow Pass Road*



*Willow Pass Road*

**Study Description:** Evaluate potential enhanced bicycle and pedestrian improvements, including Class IV separated bike lanes and green infrastructure, along Port Chicago Highway between McAvoy Harbor/Bay Point Regional Shoreline and Willow Pass Road and Willow Pass Road from Evora Road/westbound State Route 4 ramps to the border with the City of Pittsburg.

**Background:** Willow Pass Road acts as the main street along a commercial corridor in the Unincorporated community of Bay Point. The roadway is currently a four-lane road, transitioning to a two-lane road east of Bailey Road, with a center turn lane. It has Class II bicycle lanes and sidewalks.

Port Chicago Highway, another major roadway in Bay Point, runs north from Willow Pass Road through residential neighborhoods, in proximity to two schools, a public library, McAvoy Harbor, and the Bay Point Regional Shoreline. Railroad tracks separate McAvoy Harbor and the Bay Point Regional Shoreline from Port Chicago Highway. Segments of Port Chicago Highway are either two lanes or four lanes. The roadway has an incomplete network of Class II bicycle lanes and sidewalks.

Both roadways are part of the County's High-Injury Network, as identified in the County's *Vision Zero Report*.

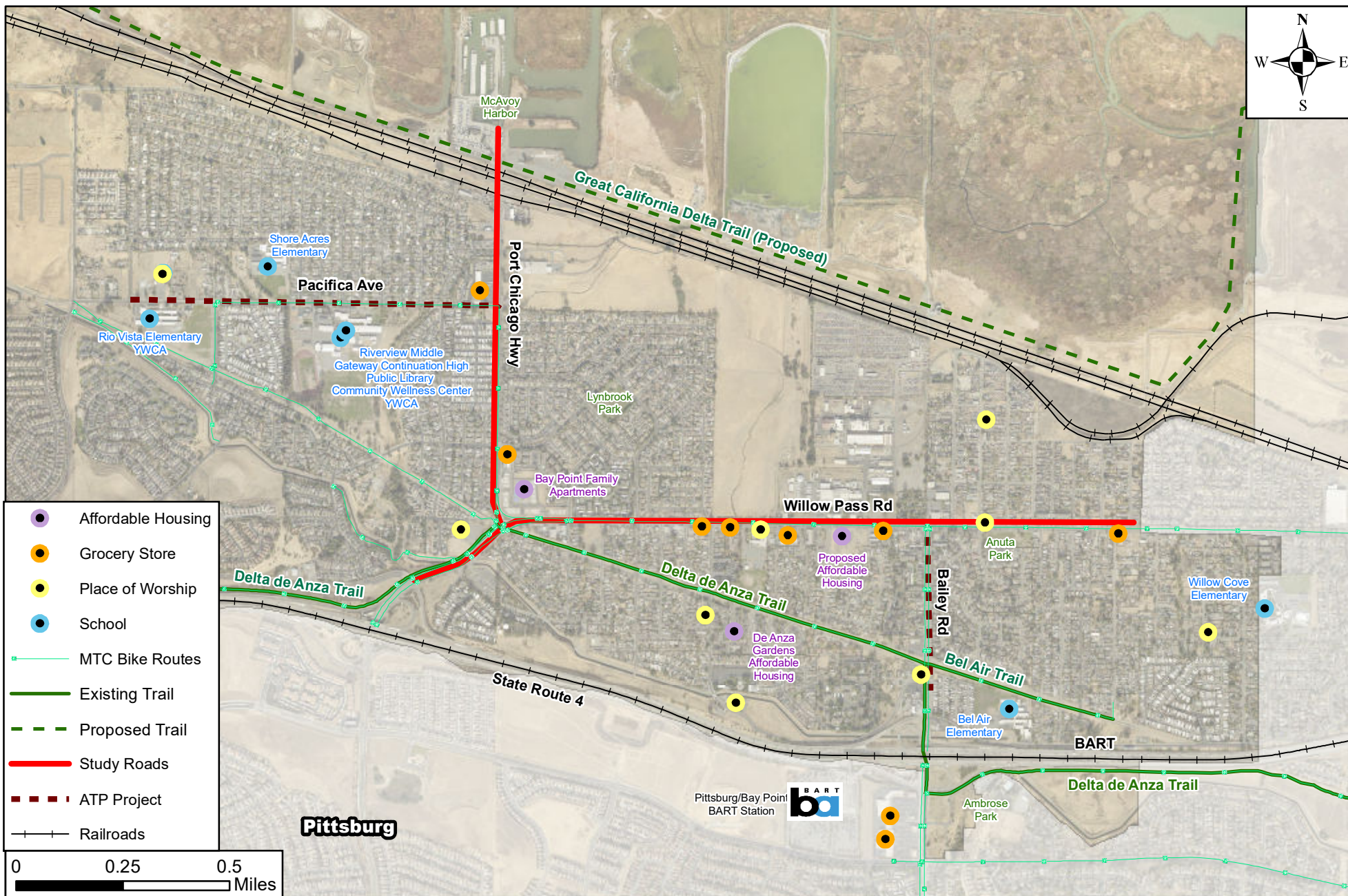
The Delta de Anza Trail, a major regional trail, crosses the intersection of Willow Pass Road and Port Chicago Highway.

Bay Point is classified as a Disadvantaged Community, due to a combination of disproportionate pollution exposure, health issues within the population, including asthma and heart disease, and socioeconomic factors, such as lower educational attainment and greater poverty and unemployment.

**Benefits:** The study will identify potential improvements that will increase roadway safety along the two corridors and encourage alternative travel modes to driving. The improvements will provide enhanced bicycle and pedestrian access to major neighborhood destinations: the Bay Point Regional Shoreline, McAvoy Harbor, Rio Vista Elementary School, Shoreview Elementary School, Riverview Middle School, the Bay Point Library, the main commercial strip and two parks (Ambrose Park and Anuta Park) along Willow Pass Road, and Bel Air Elementary School and the Bay Point BART Station, both of which are located along Bailey Road within a half-mile from the study area. The improvements will close major gaps in the County's low-stress bicycle network, increase overall circulation for active transportation, increase mode share for active transportation in the County, which is a goal of the County's *Active Transportation Plan*, and address safety concerns on the County's High Injury Network in Bay Point. The improvements will alleviate some of the conditions that contribute to Bay Point's designation as a Disadvantaged Community and provide a benefit to Bay Point residents, particularly those who do not drive.

**Policies:** The study is consistent with several Contra Costa County and Contra Costa Transportation Authority (CCTA) planning documents that support active transportation in Bay Point. The County's *Active Transportation Plan* proposes Class IV bicycle facilities along both roadways and calls them out as near-term priority projects for further study and implementation. A priority project listed in the County's *Vision Zero Final Report* is the construction of separated bicycle lanes along Willow Pass Road. The inclusion of Class IV bicycle facilities will be consistent with the CCTA *Countywide Bicycle and Pedestrian Plan's* Low-Stress Network, which identifies proposed separated facilities on both roadways. Finally, the CCTA *Pittsburg/Bay Point Community-Based Transportation Plan* recommends that infrastructure be installed or upgraded along Willow Pass Road to improve the pedestrian and bicycle experience and safety.





Contra Costa County  
Public Works  
Department

255 GLACIER DRIVE MARTINEZ, CALIFORNIA 94553 PH: (925) 313-2000 FAX: (925) 313-2333

PROJECT VICINITY MAP - CONTRA COSTA COUNTY

## Sustainable Transportation Planning Grant Port Chicago Highway and Willow Pass Road

FEDERAL ID NO:

DB: ET CB: JS

DATE: DEC 2023

Page 1 of 1